

INSTALLATION INSTRUCTIONS

NUMBER PLATE RELOCATION BRACKET



LED LAMP INCLUDED

ADR COMPLIANT SUBMERSIBLE LED LICENCE PLATE LAMP INCLUDED



UNIVERSAL VEHICLE FITMENT

SUITS VEHICLES WITH 5x150, 5x127, 5x114.3 and 6x139.7 STUD PATTERN



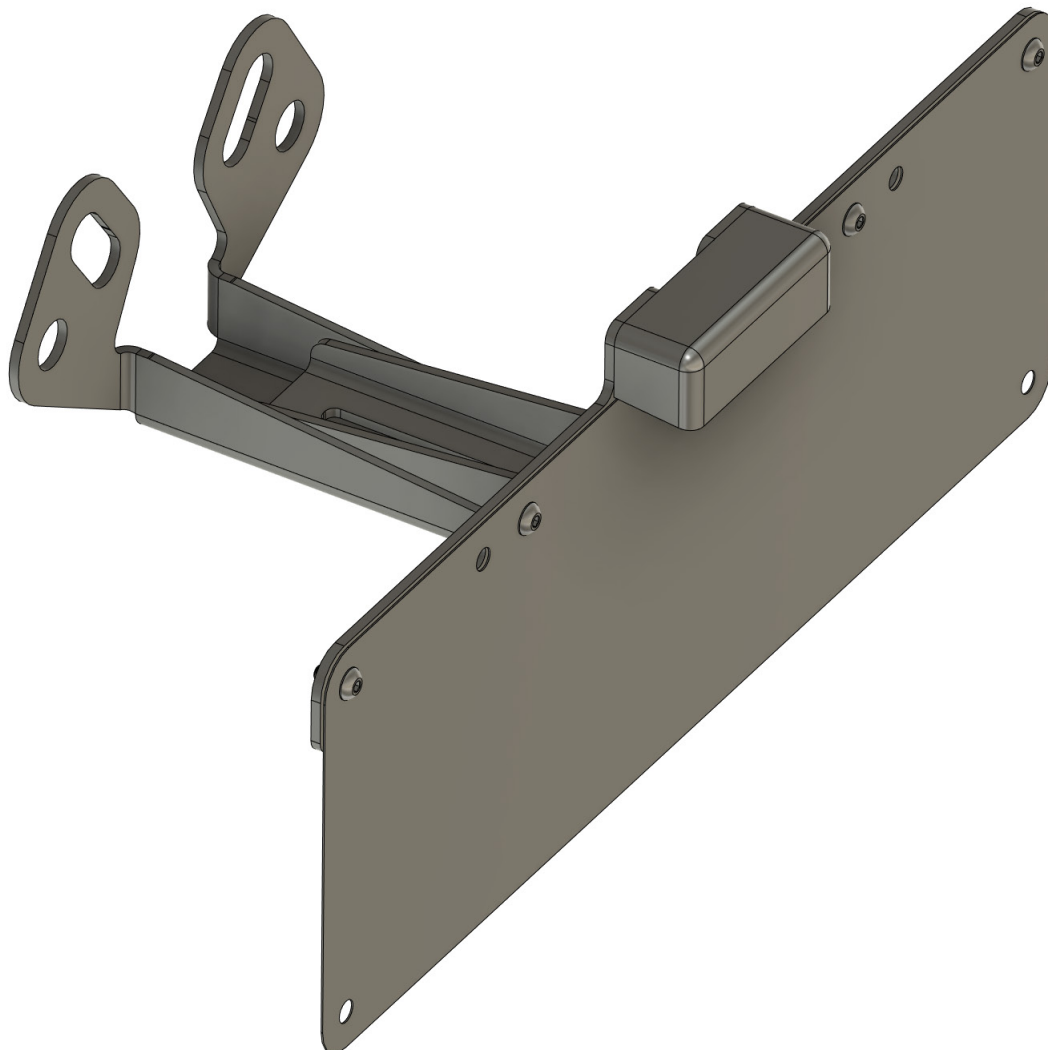
TESTED WITH 35" TYRES

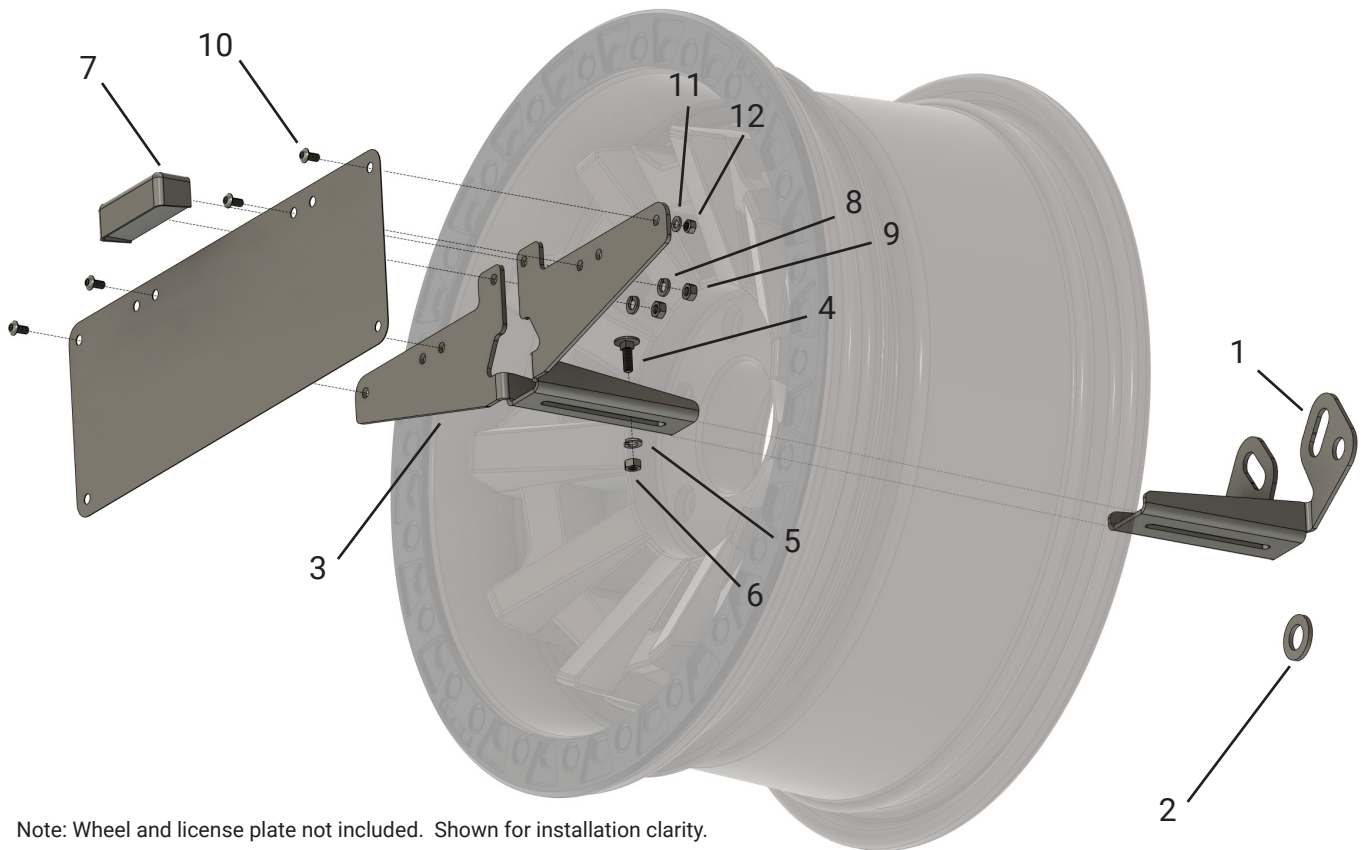
ADJUSTABLE BRACKET ALLOWS RIM OFFSETS AND TYRES UP TO 35"



AUSTRALIAN MADE

AUSTRALIAN MADE FROM POWDERCOATED 3MM STEEL





Note: Wheel and license plate not included. Shown for installation clarity.

COMPONENTS

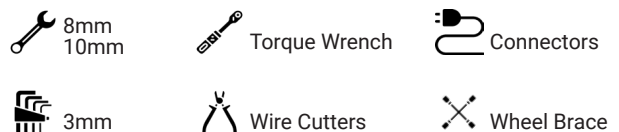
ITEM	PART NO.	DESCRIPTION	QTY.
1	TT-NPRB-PCDBRK1	PCD Mounting Bracket	1
2	EFWM16303Z	PCD 3mm Spacer	1
3	TT-NPRB-NPBRK1	Number Plate Mounting Bracket	1
4	CHBNM620Z	M6 - 1.0 Coarse x 20mm Zinc Plated Cup Head Bolt	1
5	SWM6SZ	6mm Zinc Plated Spring Washer	1
6	CHBNM620Z	M6 - 1.0 Coarse Zinc Plated Nut	1
7	KT57150	Superior LED Licence Plate Lamp	1
8	KT57150	5mm Zinc Plated Spring Washer	2
9	KT57150	M5 - 0.8 Coarse Zinc Plated Nut	2
10	BHCSM516Z	M5 - 0.8 Coarse x 16mm Zinc Plated Button Head Screw	4
11	EFWM5Z	5mm Zinc Plated Flat Washer	4
12	NNM5	M5 - 0.8 Coarse Zinc Plated Nyloc Nut	4

TORQUE SETTINGS

M5 - 7Nm (5lb ft)
M6 - 9Nm (7lb ft)
M8 - 22Nm (16lb ft)
M10 - 44Nm (32lb ft)
M12 - 77Nm (57lb ft)

Note:
Follow manufacturer torque ratings for lug nuts and other vehicle specific mounting bolts.

TOOLS NEEDED



Wear ear and eye protection at all times when using power tools

WARRANTY

This Number Plate Relocation Bracket is warranted against defects in materials and workmanship for a period of twelve (12) months from the date of initial retail purchase. Do not use this bracket kit for anything other than it's intended purpose as a number plate holder. Failure to follow these instructions or if any modifications to the product are made will void all warranty claims. For ADR compliance, an ADR approved rear number plate light (supplied) must be fitted and operational.

For more information visit <https://www.toughtoys.com.au/about-us/warranty-policy/>

IMPORTANT

The Tough Toys - Number Plate Relocation Bracket allows you to position your number plate to the spare tyre carrier on your vehicle, trailer or caravan. This is required when fitting an aftermarket bumper with wheel carrier arms to a range of 4WD vehicles or any aftermarket rear bumper to a 2007-2019 Jeep Wrangler JK.

Additional wiring is required to connect the included number plate lamp to the existing wiring of your vehicle or trailer.

Rear number plate lamp included is 12v only and ADR & ECE Compliant (48/00).

As of the publication date, these instructions are correct. Tough Brands Pty Ltd cannot be held responsible for the impact of any changes subsequently made by the vehicle or trailer manufacturer.

During installation, it is the duty of the installer to check the correct operation/clearances of all components.

Estimated installation time: 1hr.

PREPARATION

- 1 Remove spare wheel and knock out centre cap if the wheel has one. Retain centre cap in glove compartment of vehicle.



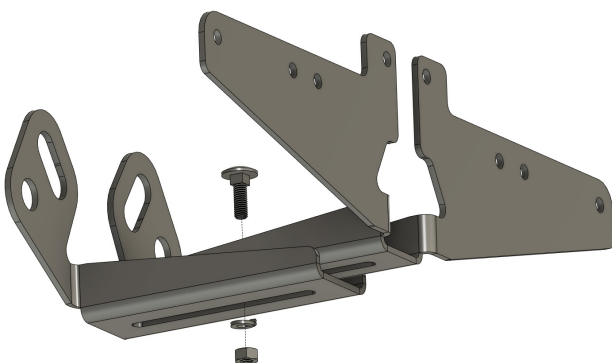
PCD BRACKET

- 2 Install PCD Mounting Bracket (1) to two upper lugs of tyre carrier. Install PCD Spacer (2) to the lower lug of the tyre carrier.
Re-install spare wheel on to tyre carrier allowing the PCD Mounting Bracket to protrude through centre hole of wheel.
Torque wheel nuts to manufacturer setting.



NUMBER PLATE BRACKET

- 3 Install Number Plate Mounting Bracket (3) to PCD Mounting Bracket (1) using M6 Cup Head Bolt (4), Spring Washer (5) and Nut (6).
Adjust bracket so it does not touch spare wheel or protrude out too far.



NUMBER PLATE & LAMP

- 4 Install Licence Plate Lamp (7) with Spring Washers (8) and Nuts (9) to Number Plate Mounting Bracket (3).
Use M5 Button Head Screws (10), Washers (11) and Nyloc Nuts (12) to install number plate to Number Plate Mounting Bracket (3).
Run additional wiring through wheel centre to the new Licence Plate Lamp and connect with a weatherproof connector in a way that the spare can be accessed easily.
Zip-tie cables to provided holes in number plate brackets.



FINISH

- 5 Check that all fasteners are tight and your wiring is not able to rub on any sharp edges. Turn on your headlights to test the operation of the Licence Plate Lamp (7). Refit any interior trims and items that were removed during the installation process.
Congratulations! You did it. Take a step back and admire your work.